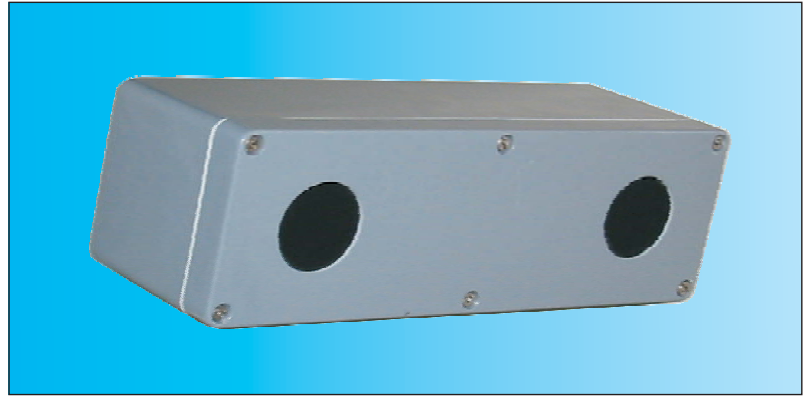


REFLECTION LIGHT-BARRIER RLB 10



APPLICATION - FEATURES

- Infrared reflection sensor of a small rugged design for use as vehicle presence detector in outdoor and indoor applications.
- RLB 10 is a configuration of a light-barrier transmitter and a light-barrier receiver in one housing.
- The reflection sensor reliably detects entering vehicles within a space cone with an aperture angle of 8°.
- For the detection of vehicles, the IR radiation reflected by the number plates is analyzed.
- Upon entrance of a vehicle, the signal output is activated **without time limit** as long as the object or vehicle is within the monitoring area.
- Thus, the reflection sensor can be used for the presence detection of vehicles as an alternative to induction loops or passive infrared sensors.

TECHNICAL DATA RLB 10

Detection range	>20 m (number plate), depending on the reflective properties
Signal output	result of vehicle detection
Output	1 potential-free relay contact, changeover 1 A / 30 VDC or 0.5 A / 125 VAC
Radiation wavelength	approx. 950 nm
Transmission angle	approx. 8°
Receiving angle	approx. 8°
Signal holding time	as long as the vehicle is within the monitoring area
Signal display	red LED internally, is illuminated in cases of detection
Supply voltage	12 VDC
Current consumption	approx. 100 mA, without Heating approx. 160 mA, with Heating
Window heater	controlled by thermostat
Ambient temperature	-25 bis + 65 °C
Protection degree	IP 65
Weight	approx. 1,2 kg
Dimensions	length 230 mm width 75 mm height 75 mm
Case	glasfiber-reinforced polyester, grey
Weight	680 g