

**Additional transmission channels for the train will be provided in the ELA line (train supervision lines)**

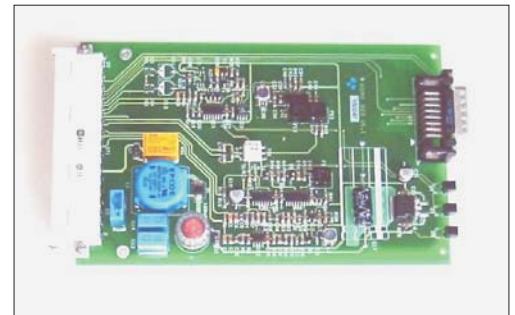


## NFI - NF AUDIO INTERFACE

### APPLICATION

An audio signal may be additionally transmitted via the ELA network that is already used for the transmission of voice signals and via the ELA coupling contacts.

No impairment of the ELA function.



### FEATURES

The carrier transmission is frequency modulated and has a band width of 6 kHz.

Several (i.e. up to 10) NFI 4 units can be connected with a linear or a star network, although only one of them must transmit signals actively at a time.

The NFI module has been designed in such a way that the voice transmission of the ELA (in the base band) will not be affected. The parameters of the additional transmission channel and of the voice transmission will not be affected by the length of the line, by open cable ends or by the number of stations/users connected.

Without any setting or adjusting being required.

### TECHNICAL DATA

Modulation	Frequency modulation
Signal-to-noise ratio	> 60 dB
Distortion	< 2 %
LF-Bandwith	100 Hz ... 6 kHz
LF-Input	symm, 600 mV into 10 kOhm other on request
LF-Output	asymmetrical, option: symmetrical possible
Power supply	200 mV Ri = 100 Ohm
Power consumption	24 V DC
Switching Input Transmitter	< 50 mA
Switching Input Receiver	TTL (L Transmitting)
	TTL (L Receiving)

### ORDERING INFORMATION

NFI - NF - Audio - Interface

delivery on request