

LIGHT BARRIER

LB 100

LB 200

FEATURES

Giant transmission & receiving angles of 8°

Therefore ideally suitable for hidden installation at the simplest assembly - without adjusting equipment

Large ranges of 200 m (LB 200) and 100 m (LB 100)

Insensitive against sunlight and other light sources

Reliable operation under conditions of fog or in case reflecting areas

Simply Installation + Switch On = O.K.

OEM versions according to specification

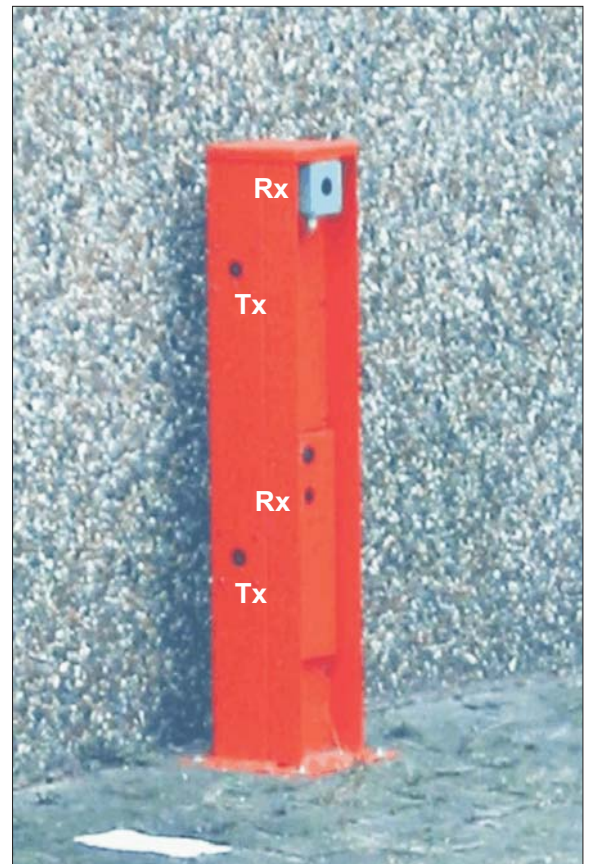
TECHNICAL DATA LB 100 / LB 200

Operating range LB 100:	100 m
Operating range LB 200:	200 m
Transmit angle:	8°
Receive angle:	8°
Supply voltage:	12 V DC
Current consumption:	Transmitter 25 mA Receiver 20 mA
Alarm (trigger) delay:	30 ms
Alarm output:	potential-free relay contact, normally closed, opens when alarm is triggered serial resistor 10 Ohm
Ambient temperature:	- 25° C up to + 65° C
Dimensions - One way light barrier (case IP 65):	B 75 mm x H 80 mm x T 57 mm

ORDERING INFORMATION: delivery on request



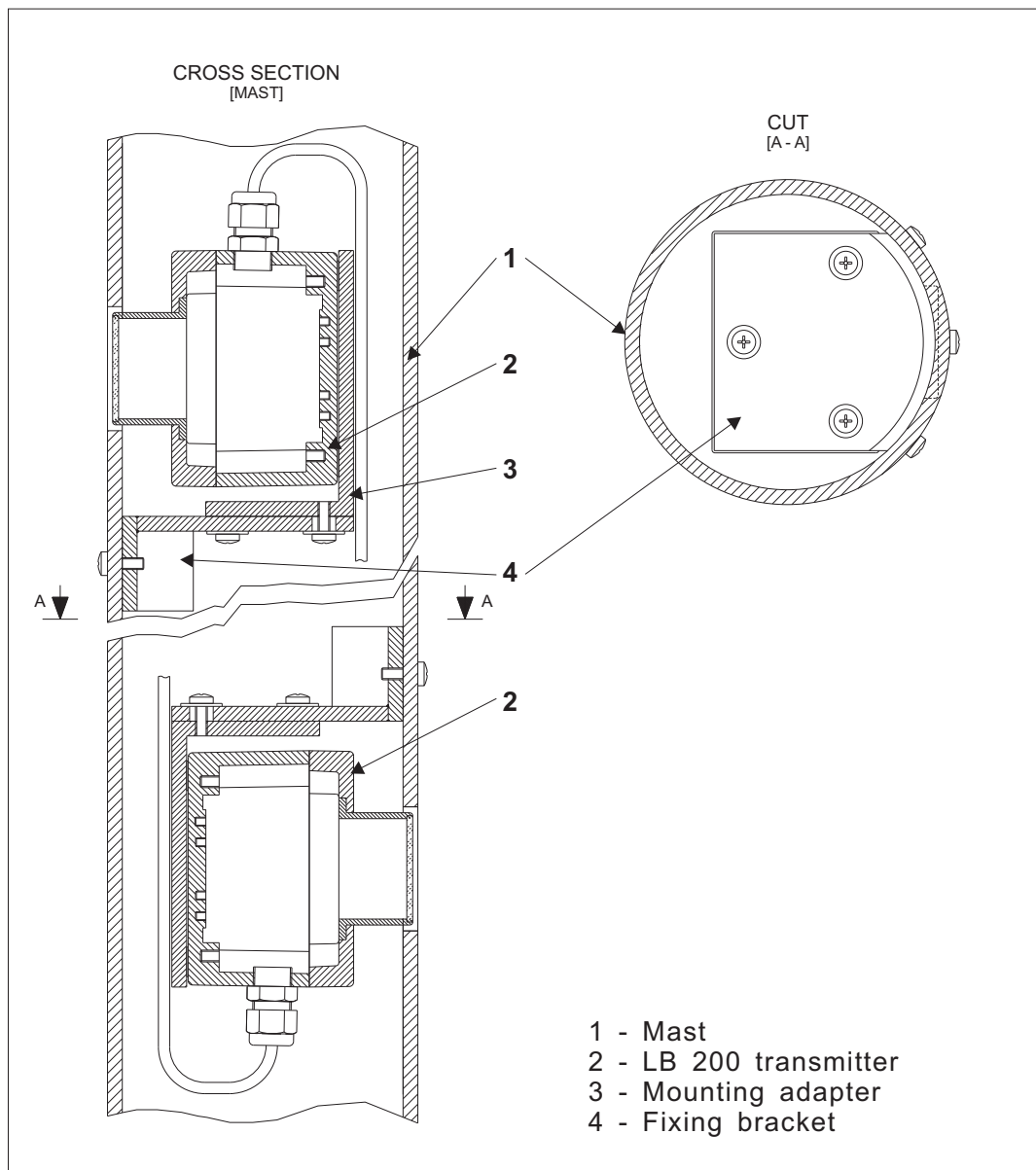
LB 200 -
one way light barrier in case IP 65



Hidden Installation -
light barriers in electric hook-up point

ACTIVE INFRARED SENSORS

Brief descriptions and data sheets



- 1 - Mast
- 2 - LB 200 transmitter
- 3 - Mounting adapter
- 4 - Fixing bracket



LB 200 - one way light barrier in housing IP 65 for assembly inside the mast



LB 200 - Hidden assembly inside the mast

LB 200 - Light barriers mounting inside the mast

© ASAS Systemtechnik GmbH 2009 / Subject to alternation

OEM - versions (examples)



Transmitter 40°



Receiver 30° in dom-camera-housing



OEM receiver